

RINGANT-DM

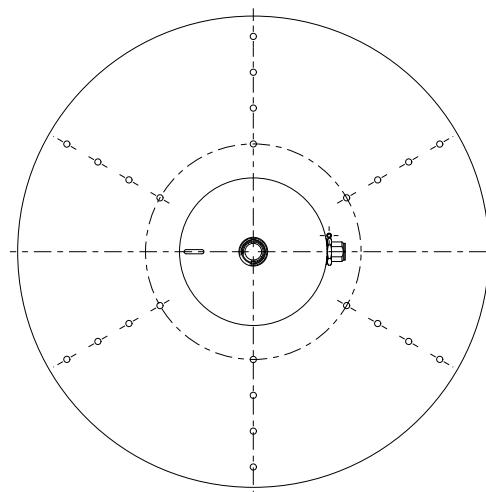
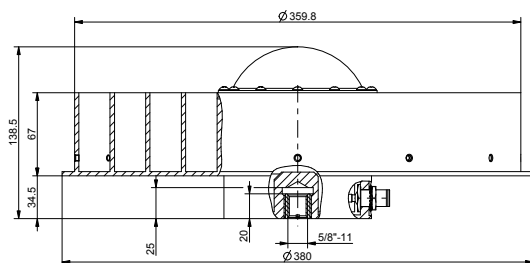
Reference Station antenna with choke ring RingAnt-DM is the standard Dorne-Margolin antenna element mounted on standard JPL Choke Ring. RingAnt-DM can track GPS, GLONASS, GALILEO, BEIDOU, WAAS, EGNOS, MSAS, GAGAN and QZSS signals.

The RingAnt-DM antenna is designed for highly efficient multipath reduction and is recommended for use in GNSS reference networks, infrastructure monitoring, high precision geodetic surveying, or machine control applications.



RINGANT-DM

Signal	
Capability	GPS L1/L2/L5 GLONASS L1/L2/L3 GALILEO E1/E2/E5ab/E6 BEIDOU B1/B2/B3 WAAS L1/L5, EGNOS, MSAS, GAGAN QZSS L1/L2/L5/LEX
Frequency	1555~1610MHz 1164~1300 MHz
Electrical	
Antenna Gain	1555~1610MHz – 6.0 dB typ. 1164~1300 MHz – 5.0 dB typ.
Axial Ratio	3.0 dB max.
Output Impedance	50 Ohm
VSWR	2.0 : 1
LNA gain	32±2 dB
Noise Figure	1555~1610MHz – 2.2 dB typ. 1164~1300 MHz – 1.7 dB typ.
DC voltage	3.0~15.0VDC 45mA@5.0V typ.
Environmental	
Operating Temperature	-45°C ~ +85°C
Storage Temperature	-50°C ~ +85°C
Humidity	Waterproof
Mechanical	
Antenna type	Omnidirectional, hemispherical
Connector	N-type
Weight	4.4 kg
Dimensions	Ø 380 mm; H=138 mm
Enclosure	Radome: Fiberglass Base: Aluminum
Mounting	5/8-11 inches mount



* All dimensions are in mm



JAVAD GNSS
www.javad.com
Rev.2.3 January 14, 2015



Avda. Filipinas, 46
28003 Madrid
Tfo. 91 5537207
Fax 91 5336282

E-mail grafinta@grafinta.com