

SUBPRO 1210 Sub-Bottom Profiler High Resolution at Good Penetration

The new state of the art high-frequency, high power sub-bottom profiler from General Acoustics, the SUBPRO 1210, with its advanced sending signal synthesis, high performance data acquisition, with high dynamic range and SNR and advanced signal processing is a universal survey system with outstanding advantages for a wide range of applications with different survey tasks.



Fig. above: The 12 KHz transducer



Fig. above: Example of Survey Ship

Applications:

- High resolution subsoil exploration
- (Buried) pipeline and small object detection
- Offshore hazard surveys
- Dredge, mining and dump monitoring
- Very shallow water surveys
- High sediment load surveys
- Volume determination (e.g. for sand reclamation)
- Scour detection and monitoring
- Environmental surveys
- Archaeological surveys
- Sediment transport investigations

Advantages:

- Suitable for a Wide Range of Survey Tasks
- Shallow Water Surveying starting at 1.5 m
- Typical Seabed Penetration up to 10 m in Sand
- Highest Detection Probability of Objects and Layers
- Real-Time Zoom and Re-Processing of RAW data
- Highest Productivity for Result Generation
- Multi-Monitor Support
- Easy to use WINDOWS[®] software SUBPRO Studio for operation and re-processing
- Complete Stand-Alone System and Easy System Integration



Fig. above: Example, mounting of the transducer at a tube

SUBPRO 1210 Sub-Bottom Profiler



High Resolution at Good Penetration

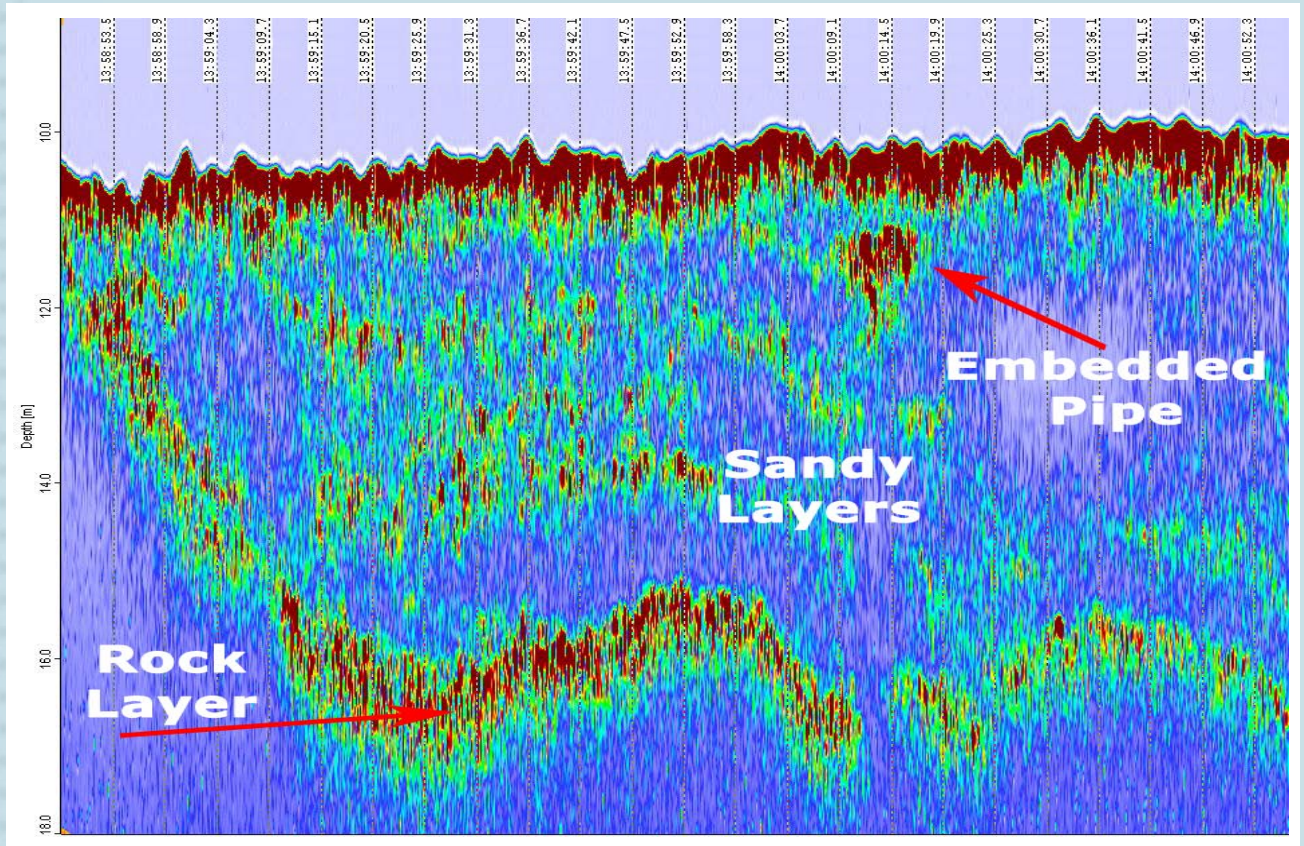


Fig. above: Survey in the Port of Aberdeen

The SUBPRO 1210-System consists of an echosounder unit and a high performance PC unit in 19" housings. It integrates the controller for triggering, transmitting, receiving, amplifying and processing of signals, analysis unit, pps-module for time synchronisation and power supply.

The PC unit includes the storage of results and project files on hard disc (data back up CD-R/DVD-R combo drive), TFT monitor and easy to handle WINDOWS® software SUBPRO Studio for re-/post-processing and export of data.

Specifications of the SUBPRO 1210:

Technical internal resolution: 1 mm

Typical penetration: up to 10 m in Sand

Frequency: 12 kHz

Power: up to 10 kW peak

Weight of Transducer: 35 Kg

Size of Transducer (Ø/height): 380 mm / 165 mm

Input: pps time, GPS (NMEA), HRP (optional)

Output: SEG-Y, XTF (optional), Ethernet, Printer, CD-R/DVD-R



Complete SUBPRO 1210 System

Representative of General Acoustics:



Avda. Filipinas, 46
28003 Madrid
Tfo. 91 5537207
Fax 91 5336282

E-mail grafinta@grafinta.com

SUBPRO 1210 Sub-Bottom Profiler