

## Shallow Water Profiler: Base•X<sub>2</sub>

- Features embedded WiFi connectivity and GPS geo-referencing. Data is automatically downloaded and processed into desired manufacturer formats, saving valuable time for the operator
- Converts from an SVP to a CTD profiler with the switch of a single sensor head
- Is available rated to 100 m and 500 m

## Deep Water Profiler: Minos•X

- Known for its rugged performance and ease of use
- Is the smallest combined CTD/SVP on the market
- Rated to 1000 m in acetal, 6000 m in titanium



Minos•X

Base•X<sub>2</sub>

Name & Product Code	No. of Ports	Size (dia. x length, mm)	Communications	Input Voltage (v)	Materials	Max. Depth (m)	Weight in Air (kg)	Weight in Water (kg)
<b>BASE•X<sub>2</sub></b> PDC-BSX2-P1S1-01	2	69 x 390	WiFi, RS-232, RS-485	9-28	Acetal	100	1.17	0.49
<b>BASE•X<sub>2</sub></b> PDC-BSX2-P1S1-05						500		
<b>MINOS•X</b> PDC-MNX-P1S2-10 PDC-MNX-P2S1-10	3	76 x 597	RS-232, RS-485, <sup>1</sup> WiFi	8-26	Acetal	1000	2.23	0.73
<b>MINOS•X</b> PDC-MNX-P1S2-60 PDC-MNX-P2S1-60	3					Titanium		

<sup>1</sup> With Data•Xchange

Name & Product Code	Max. Depth (m)	Range	Precision (+/-)	Accuracy (+/-)	Resolution	Response Time
<b>SV•Xchange™</b> XCH-SV-STD	6000	1375-1625 m/s	0.006 m/s	0.025 m/s	0.001 m/s	47 μs
<b>P•Xchange™</b> XCH-PRS-0050 to XCH-PRS-6000	As per range	50, 100, 200, 500, 1000, 2000, 4000, 5000, 6000 dBar	0.03% FS	0.05% FS	0.02% FS	10 ms
<b>CT•Xchange™</b> XCH-CT-RA-090-n545	6000	CND: 0-90 mS/cm <sup>1</sup> TMP: -5-45 °C <sup>2</sup>	CND: 0.003 mS/cm TMP: 0.003 °C	CND: 0.01 mS/cm TMP: 0.005 °C	CND: 0.001 mS/cm TMP: 0.001 °C	CND: 25 ms <sup>3</sup> TMP: 100 ms

<sup>1</sup> Will over-range to 100 mS/cm. Inquire for specifications.

<sup>2</sup> Will over-range to 60 °C. Inquire for specifications.

<sup>3</sup> At 1 m/s flow



Available with WiFi and GPS

Base•X<sub>2</sub>: embedded

Minos•X: with Data•Xchange

Plus•X: with Data•Xchange

WiFi Range: >20m

GPS Accuracy: <5m

Speed: up to 300 kB/s

Maximum Depth: 1000m

## Real-Time Sound Velocity: Micro•X

- Designed primarily for MBES, hull mounted applications, and vehicle integration
- Pairs with Base•X<sub>2</sub> or Minos•X to provide a total SV package
- Cables compatible with all major multibeam systems available; custom configurations available on request

Name & Product Code	Size, mm (dia. x length)	Communications	Input Voltage (v)	Materials	Max Depth (m)	Weight in Air (kg)	Weight in Water (kg)
MICRO•X PDC-MIX-P1S0-60	33 x 240	RS-232, RS-485	8-26	Titanium	6000	0.39	0.25

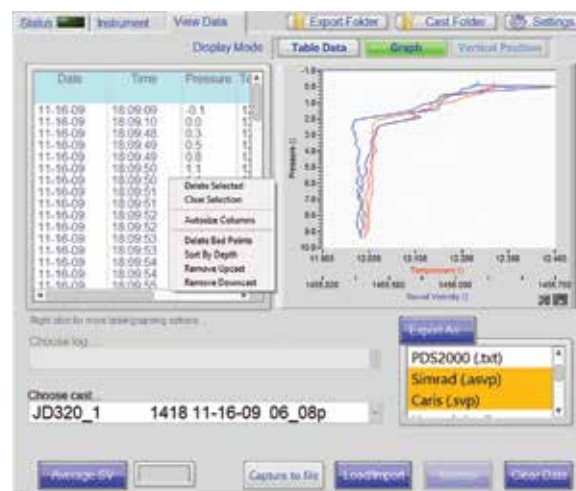
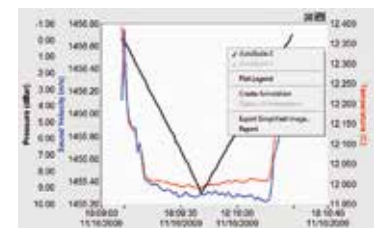
Name & Product Code	Max. Depth (m)	Range	Precision (+/-)	Accuracy (+/-)	Resolution	Response Time
SVXchange™ XCH-SV-STD	6000	1375-1625 m/s	0.006 m/s	0.025 m/s	0.001 m/s	47 μs



## Software: SeaCast

SeaCast provides an intuitive interface with X•Series instrumentation, offering easy instrument setup, data collection and management, and exporting tools.

- Automated connection and workflow via wireless or cable
- Instrument and sensor details displayed
- Calibration certificates printed on demand
- Automatic or manual data filtering
- Offline access to existing casts for post-processing
- Show live data on multiple graphs concurrently
- Graph editing and annotation for export
- Automated data export functionality
- Simultaneous export to multiple data formats, including:
  - Hypack
  - Quinsy
  - Kongsberg
  - Sonardyne
  - PDS 2000
  - CARIS
  - CARIS (concatenated)
  - HIPAP
  - CSV
  - Custom



Avda. Filipinas, 46  
28003 Madrid  
Tfo. 91 5537207  
Fax 91 5336282

E-mail grafinta@grafinta.com

