

## **DL SERIES** **Digital Level**



### **Features**

- Advanced Accuracy
- Trigger Key Function
- 3.0 Inch Colorful Touch Screen for DL-2003A
- Magnetical-damped Compensator
- Multiple Data Transform
- Bluetooth Remote Control for DL-2003A



**DL-2003A**

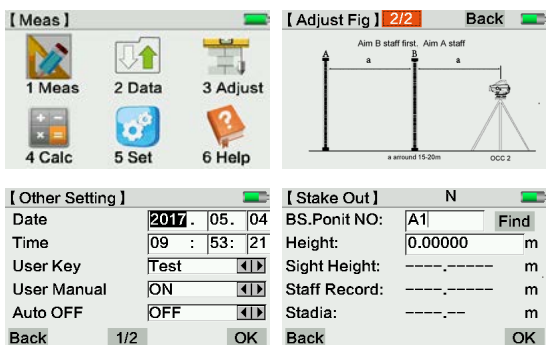


**DL-2007**

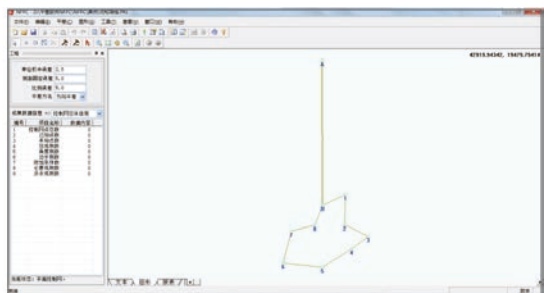


**DL-202**

## Software



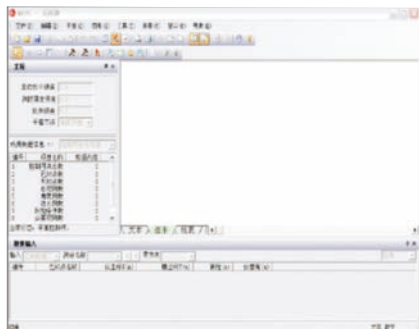
### Intelligent On-board System for DL-2003A



### Powerful Post-processing Software

It contains adjustment routines for dynamic adjustment of horizontal & vertical control network and angle & direction adjustment.

Easily zoom in or out to see the overall data in graphic.



### Seamless Transfer with Various Data Formats

Station	Length	Azimuth	Length	SD	SD	Height	Height
1	35.2335	89.9155	0.1135	0.1135			
2	54.882	89.9155	-0.262	-0.1485			
3	48.915	138.8355	-0.937	-1.0855			
4	38.948	175.9155	-0.438	-1.5435			
5	37.1895	211.1055	-0.6155	-2.2555			
6	55.139	265.2475	0.731	-1.0445			
1	55.1435	55.1435	-0.7305	-0.7305			
2	37.1875	92.3455	0.5835	-0.1485			
3	35.1825	127.4435	0.4855	0.3395			
4	48.9555	176.3485	1.8975	1.4365			
5	54.8475	235.9955	0.2345	1.8655			
6	35.2175	246.2125	-0.3265	1.3345			

### Precision Analysis & Report

The DL Data Download & Processor Software, makes the field work easier to display the complex leveling tasks.

## Specifications

Item		DL-2003A	DL-2007	DL-202
Height Accuracy (standard deviation for 1km double run leveling)	Digital Reading	0.3mm	0.7mm	1.5mm
	Optical Reading	2.0mm		
Distance Accuracy	Digital Reading	D≤10m:10mm;D>10m:D*0.001		
Distance Range	Digital Reading	2m~110m		
Minimum Display	HD	0.01mm/0.1mm/1mm	1mm/0.1mm	0.1mm/1mm
	Distance	0.1/1cm		
Measuring Time		within 3s in normal condition		
Telescope	Magnification	32X		
	Resolving Power	3"		
	Field of View	1°30'		
	Multiple Constant	100		
	Additive Constant	0		
Compensator	Type	magnetic-damped		
	Range	>±12'		
	Accuracy	0.20"/1'	0.30"/1'	0.50"/1'
Data Storage (for only DL-201, DL-2007)	Storage	128MB	16MB	
	Point Name	increasing/decreasing/customized		
	Connection	RS232/Bluetooth	USB	
	External Storage	U disk	SD Card	--
Circular vial Accuracy		8'/2mm		
Display		3.0 inch LCD Colorful Touch Screen	160*64dpi LCD with illumination	128*32dpi LCD with illumination
Working Temperature		-20°C~50°C		
Dimension		230mmX225mmX203mm	230mmX150mmX210mm	
Weight		3.1kg	2.5kg	
IP Standard		IP65	IP54	

## Invar Staff NSI-20M Specification

1	Circle Bubble		≤12'/2mm
2	Surface curvature distinction		≤4mm
3	Vertical of central axis and underside		≤5'
4	Tolerance of zero point		≤0.05mm
5	Basic barcode graduation tolerance	Deviation	≤0.02mm
		Standard deviation	≤0.013mm
6	Interval tolerance		≤0.04mm