



# scanfly LITE

# LITE

www.scanfly.it

## The payload lidar not only for UAS



Its design allows to install the device on **any vehicle**.  
**Easy to use** is the keyword of the product.  
Easy connection, easy configuration and easy use.  
**Scanfly LITE** technical specifications are clear, simple and unique. Scanfly LITE is suitable for any application, depending on the vehicle on which it is mounted on: from a classic topographic survey to agro-forestry ones, not to mention its use for **Defence**, **Security** and **Monitoring** purposes.

## FEATURES



Scanner Velodyne Puck LITE



Accurate INS (IMU/GNSS)



Dual antenna dual receiver RTK/GPS/Glonass



Integrated board to control, acquire and synchronize sensors



Software: Smart Processing Lidar for data fusion



Carry case



Customized mounting interface  
Easy installation on any vehicle



5-12-24-42 MP RGB camera  
Multisensor integration interface  
External camera integration



Boresight calibration tool



CE Marking  
Ingress Protection IP55

## MULTI PLATFORM SOLUTIONS



FLYING

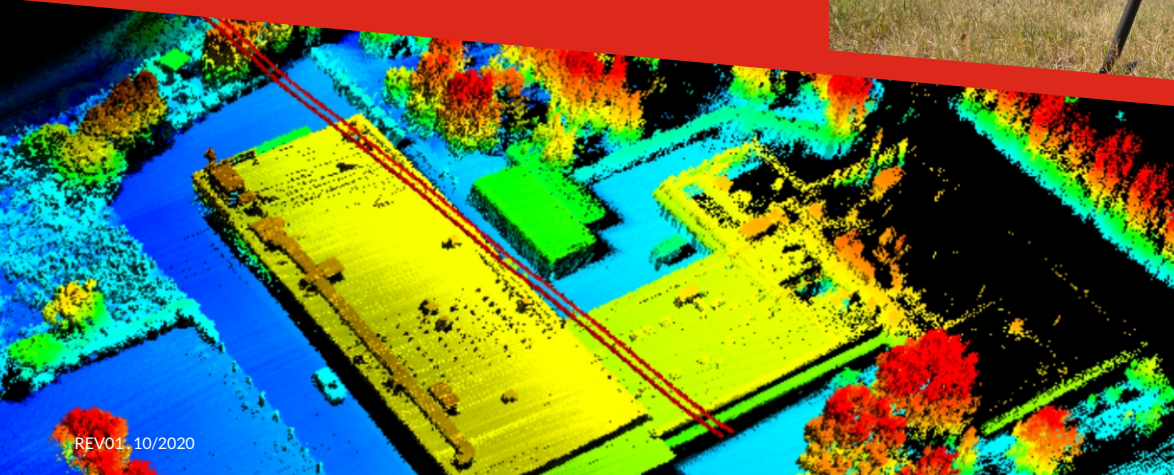


BACKPACK



ON BOARD

## THE ULTRA COMPACT LIGHTWEIGHT SOLUTION FOR 3D LIDAR MAPPING.



T. +39 02 006 14 452  
info@3dtarget.it  
www.3dtarget.it



## GENERAL

POWER SUPPLY VOLTAGE	12-24 VDC
POWER CONSUMPTION	< 40 W
OPERATING TEMPERATURE	- 10° + 40° C
QUICK RELEASE MOUNTING PLATE	Included
OPTIONAL MOUNTING KIT	Car / Backpack

## LASER SCANNER

LASER CLASS	1 (wavelength 905 nm)
CHANNELS	16
RECOMMENDED AGL	15-70 m
ROTATION RATE	5-20 Hz
NUMBER OF RETURNS	2
RANGE ACCURACY	30 mm
SCANNER ORIENTATION	User-adjustable (0°-30°-60°-90°) ③

## INTEGRATED SENSOR

<b>GNSS</b>	
NUMBER OF RECEIVERS / ANTENNAS	2
CONSTELLATION	L1/L2 GPS / Glonass
OPERATION MODE	PPK / RTK (optional)

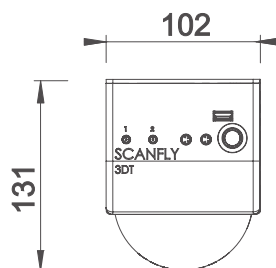
<b>IMU</b>	
RATE	100 Hz – 250 Hz (optional)
ACCURACY	Roll/Pitch 0.03° / Heading 0.08° ②

<b>RGB CAMERAS (OPTIONAL)</b>	
GLOBAL SHUTTER CAMERA	5-12 MP ④
MIRRORLESS CAMERA	24-42 MP ⑤
NUMBER OF CAMERAS	1 or 2

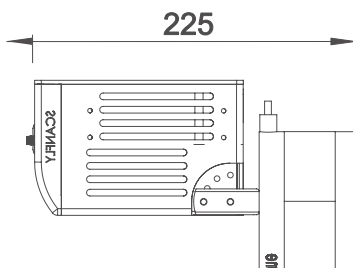
- ① With Velodyne Puck LITE laser scanner and except for GNSS antennas, cables and quick mount adapter.  
 ② PPK performance with a minimum of 6 GPS satellites, HDOP<3, ground station not farther than 10 km.  
 ③ Boresight calibration tool included.  
 ④ Basler acA2440-20gc (5 MP) or Basler acA4112-8gc (12 MP).  
 ⑤ Sony α6000 (24 MP) or Sony α7R III (42 MP).

SCANFLY I Front View

SCANFLY I Side View



Values in millimeters



Values in millimeters

Dimensions, weight, technical features are subject to change at any time.  
 Specifications are subject to change without notice.

## OVERVIEW

Weight:  $\approx$  1.60 kg ①

Dimensions:  
225 x 131 x 102 mm

Certification: IP55 / CE

Scan Rate: up to 600 000 pts/s

Range: up to 100 m

Accuracy: 5 cm ②

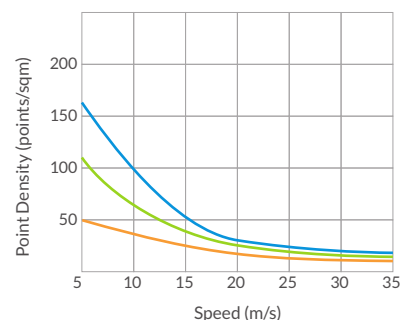
Precision: 4 cm

Storage:  
Internal 500 GB /  
Up to 1 TB (optional)

Interface Connection:  
Wi-Fi  
Ethernet

Software:  
Scanfly Web-app  
Smart Processing Lidar  
Smart Survey Scanfly (optional)

## Pointcloud Density



Range to Target — 40m  
 — 60m  
 — 100m



Avda. Filipinas, 46  
 28003 Madrid  
 Tfo. 91 5537207  
 Fax 91 5336282

E-mail [grafinta@grafinta.com](mailto:grafinta@grafinta.com)