

# 3400

## SUB-BOTTOM PROFILING SYSTEM

### FEATURES

- Enhanced Sub-bottom PVDF receivers
- Sub-bottom mode or pipeliner mode
- Dual 2-16 kHz transducers
- Pole-mount or tow options
- Digital receiver on towfish with Ethernet telemetry and power
- Reduced diameter tow cable
- Real-time pitch, roll, heave and depth sensors
- Surface echo attenuation
- Pulse library tailored for different survey applications
- Data display in multi-frequency bands

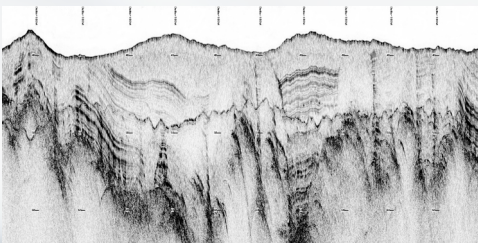
### APPLICATIONS

- Geological surveys
- Environmental site investigations
- Sediment classification
- Buried pipeline & cable surveys
- Archeological surveys
- Mining/dredging surveys
- Map, measure & classify sediment layers within the sea floor



Building on the long running success of the EdgeTech sub-bottom profiler product line, the EdgeTech 3400 provides users many enhancements to current sub-bottom profiler systems. The 3400 is a wideband Frequency Modulated (FM) sub-bottom profiler utilizing EdgeTech's proprietary Full Spectrum CHIRP technology. The system generates high resolution images of the sub-bottom stratigraphy in oceans, lakes, and rivers and provides excellent penetration in various bottom types. The EdgeTech 3400 comes in a dual 2-16 kHz transducer configuration. The towfish is configured with new PVDF receiver arrays segmented for standard sub-bottom profiling operations or a unique "pipeliner" mode for optimal location and imaging of buried pipelines. The system offers Real-Time Reflection Coefficient Measurements. This unique ability of the EdgeTech Sub-Bottom Profiler system allows users the ability to collect complex 'analytic' data using linear system architecture to measure sediment reflection and analyze sediment type determination. Additionally, the system has discrete transmit and receive channels allowing for continuous data collection resulting in a high ping rate particularly important for construction and pipeline surveys.

The topside configuration can support higher power configurations using an external amplifier. The newly designed towfish can either be towed behind a vessel or pole mounted over the side of the vessel. The EdgeTech 3400 Sub-bottom Profiling System comes as a complete package and includes a towfish, cable and a topside processor (configurable as a portable or rackmount topside) running EdgeTech's DISCOVER sub-bottom acquisition & processing software. The 3400 can also be interfaced to 3rd party software.



For more information please visit [EdgeTech.com](http://EdgeTech.com)

[info@EdgeTech.com](mailto:info@EdgeTech.com) | USA 1.508.291.0057



Avda. Filipinas, 46  
28003 Madrid  
Tfno. 91 5537207  
Fax 91 5336282

E-mail [grafinta@grafinta.com](mailto:grafinta@grafinta.com)

# 3400

## SUB-BOTTOM PROFILING SYSTEM



Avda. Filipinas, 46

28003 Madrid

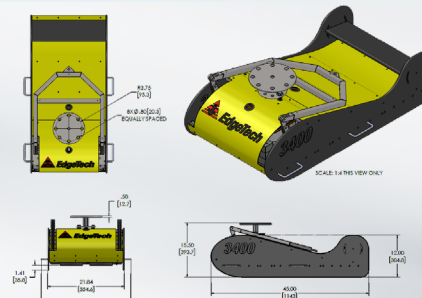
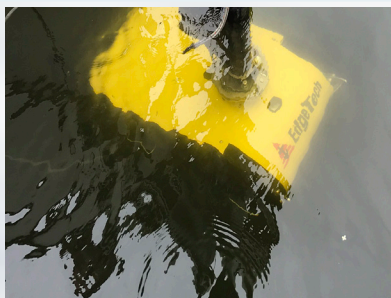
Tfo. 91 5537207

Fax 91 5336282

E-mail [grafinta@grafinta.com](mailto:grafinta@grafinta.com)

### KEY SPECIFICATIONS

TOWFISH	
Frequency Range	2 - 16 kHz
Vertical Resolution	6 - 10 cm (3 - 4 inches)
Penetration (typical)	
In coarse calcareous sand	6 m (20 feet)
In clay	80 m (262 feet)
Transmission Type	Full Spectrum® FM Signal (CHIRP)
Length/Width/ Height	114 x 55 x 30 cm (45 x 21 x 12 inches)
Weight in Air	65 kg (144 lbs)
Weight in Water	33 kg (73 lbs)
Depth Rating	100 m
Tow Cable Length	50 m (maximum length)
TOPSIDE INTERFACE	
Hardware	Rugged, portable splash proof enclosure (or Rackmounted)
Recommended Operating System	Windows® 10
Display (Optional)	Splash resistant semi-rugged laptop
File Format	Native JSF, SEG-Y & XTF
Input/Output	Ethernet
Power Input	120/220 VAC Auto sensing
POLE MOUNT	
Length/Width/Height	114 x 55 x 39 cm (45 x 21 x 15.35 inches)
Weight in Air	65 kg (144 lbs) – towed configuration 70 kg (155 lbs) – pole mounted configuration
Weight in Water	33 kg (73 lbs) – towed configuration 35 kg (78 lbs) – pole mounted configuration
Deck Cable Length	10 m (50 max)
TOW CABLE	
Tensile Strength	545 kg (1202 lbs)
Min. Bending Radius	15 cm (6 inches)



For more information please visit [EdgeTech.com](http://EdgeTech.com)

[info@EdgeTech.com](mailto:info@EdgeTech.com) | USA 1.508.291.0057