

DIGITAL SCIENTIFIC ECHOSOUNDERS

BioSonics, Inc. – World Leader in Digital Scientific Echosounder Technologies

MX ECHOSOUNDER

AQUATIC HABITAT ASSESSMENT AND MAPPING

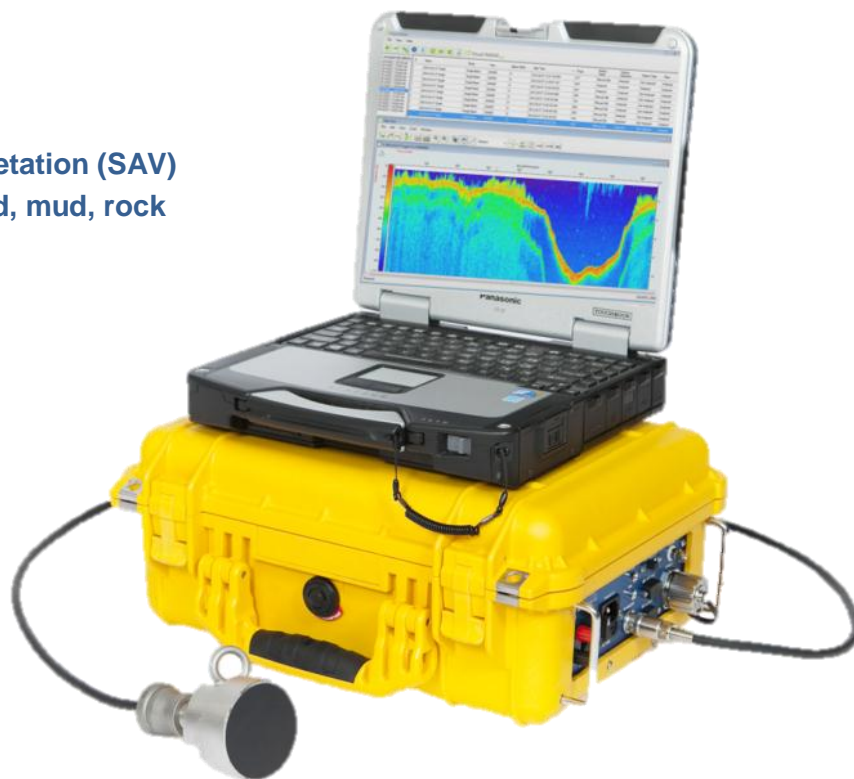
Assessment of Submersed Aquatic Vegetation (SAV)
Substrate Classification – delineate sand, mud, rock
Bathymetric Mapping

Performance Features

- Portable, weatherproof, and rugged with storage for cables and transducer
- Precision instrument, calibrated and highly accurate
- Complete with software for data acquisition, processing and visualization
- **GENERATE MAPS INSTANTLY**
- Integrated DGPS sensor to geo-reference data
- High resolution. full color echoaram

Specifications

- Transmit Power: 105 Watts RMS
- Input power: 12-18 VDC or 85-264 VAC
- Draw: 5 Watts Fuse: 3 amp
- Transmit source level: 213 dB re 1uPa
- Pulse length: 0.4ms
- Ping rate 5Hz
- Range resolution: 1.7cm
- Accuracy: 1.7cm +/- 0.2% of depth
- Depth range: 0-100m
- Operating conditions: 0-50 °C
- DGPS positional accuracy: <3m, 95% typical
- DGPS velocity accuracy: 0.1 knot rms
- DGPS update rate: 1sec



Dimensions

- Echosounder Unit: 37cm x 26cm x 15cm (14.6" x 10.2"x 6"), Wt. 5.4 kg (12lbs)
- Transducer: 8.4cm L x 4.3cm diam (3.3"x1.7") 1.36 kg (3lb), Stem threads ½" - NPS

Transducer

- Single frequency – 204.8 kHz
- Beam angle – 8.5 degree conical
- Low side lobes to -18 dB
- Heavy duty stainless steel housing

Interfaces

- 1 x Ethernet (system control)
- 2 x RS232 (GPS in/out)
- 1 x BNC (external trigger)



Seattle, Washington, USA • 206.782.2211 • www.biosonicsinc.com



Avda. Filipinas, 46
28003 Madrid
Tfo. 91 5537207
Fax 91 5336282

E-mail grafinta@grafinta.com

MX Series Technical Specifications and Features

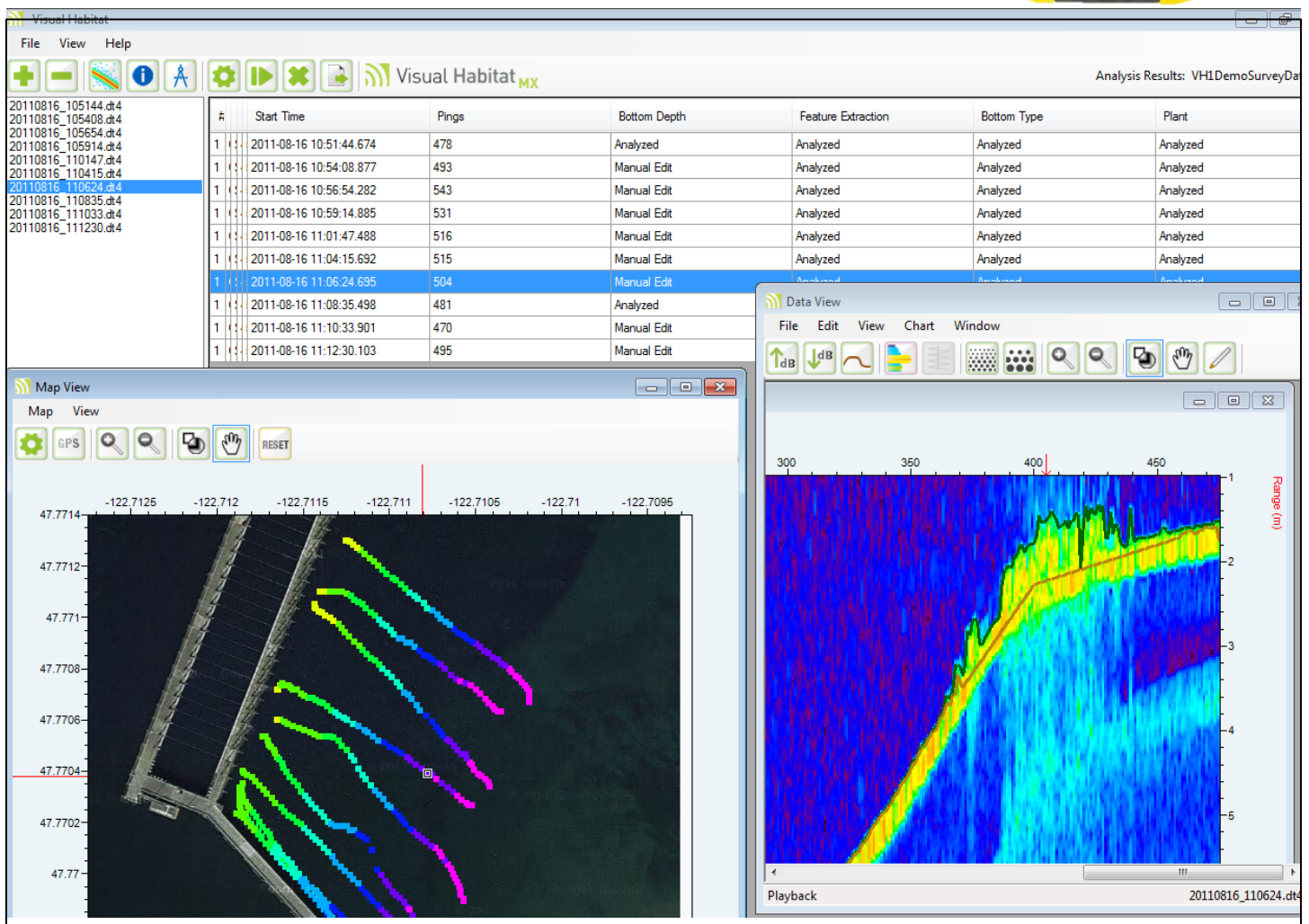
Data Analysis Software Features

Visual Habitat - A complete analysis package that provides processing for:

- SAV – canopy height, % cover, biomass
- Bathymetry – produce highly accurate maps and depth charts
- Substrate classification – delineate areas of rock, sand, mud

Export results as CSV or KML files

Quickly generate maps showing transect lines with bathymetry, bottom type, and vegetation presence



Avda. Filipinas, 46
28003 Madrid
Tfo. 91 5537207